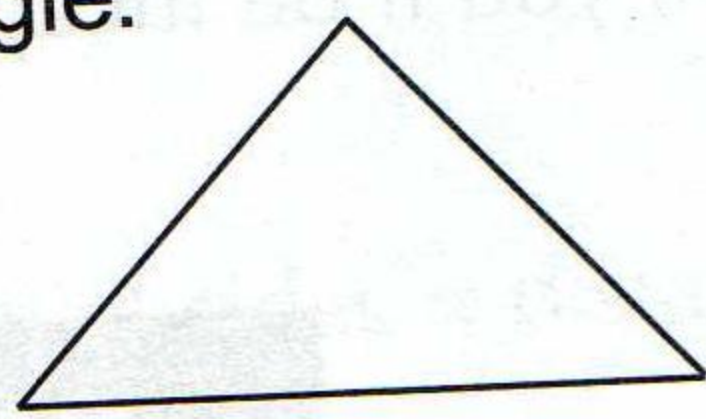


Exam Questions

Exam Questions

Calculator Not Allowed

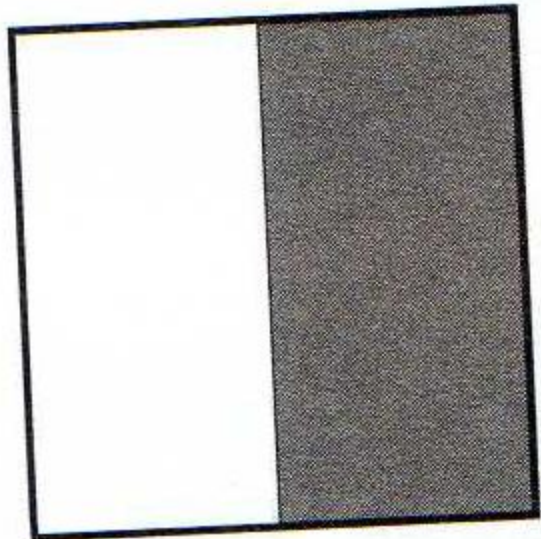
- 2 Draw in any lines of symmetry on this isosceles triangle.



(1 mark)

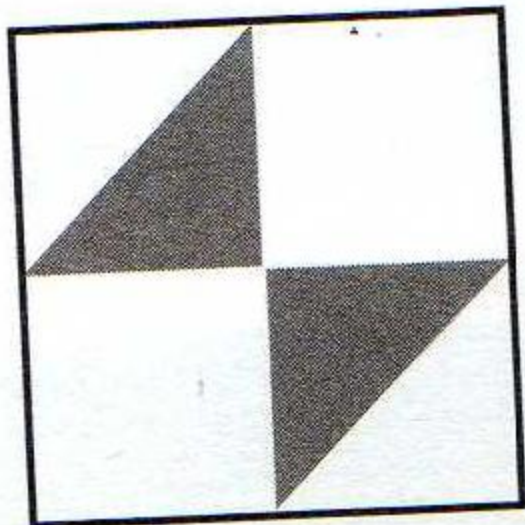
- 3 Part of these squares have been shaded. Draw in their lines of symmetry.

(a)



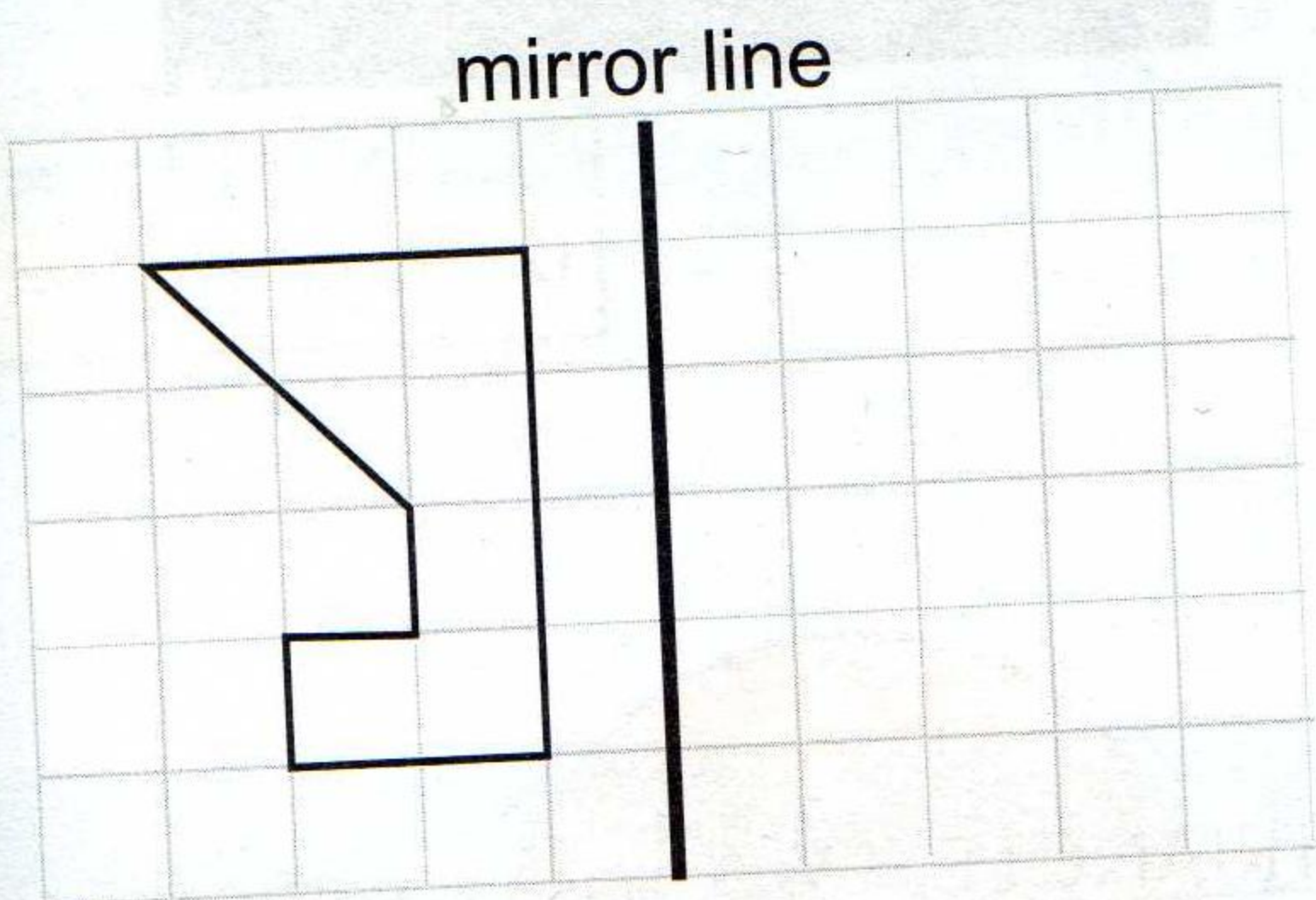
(1 mark)

(b)



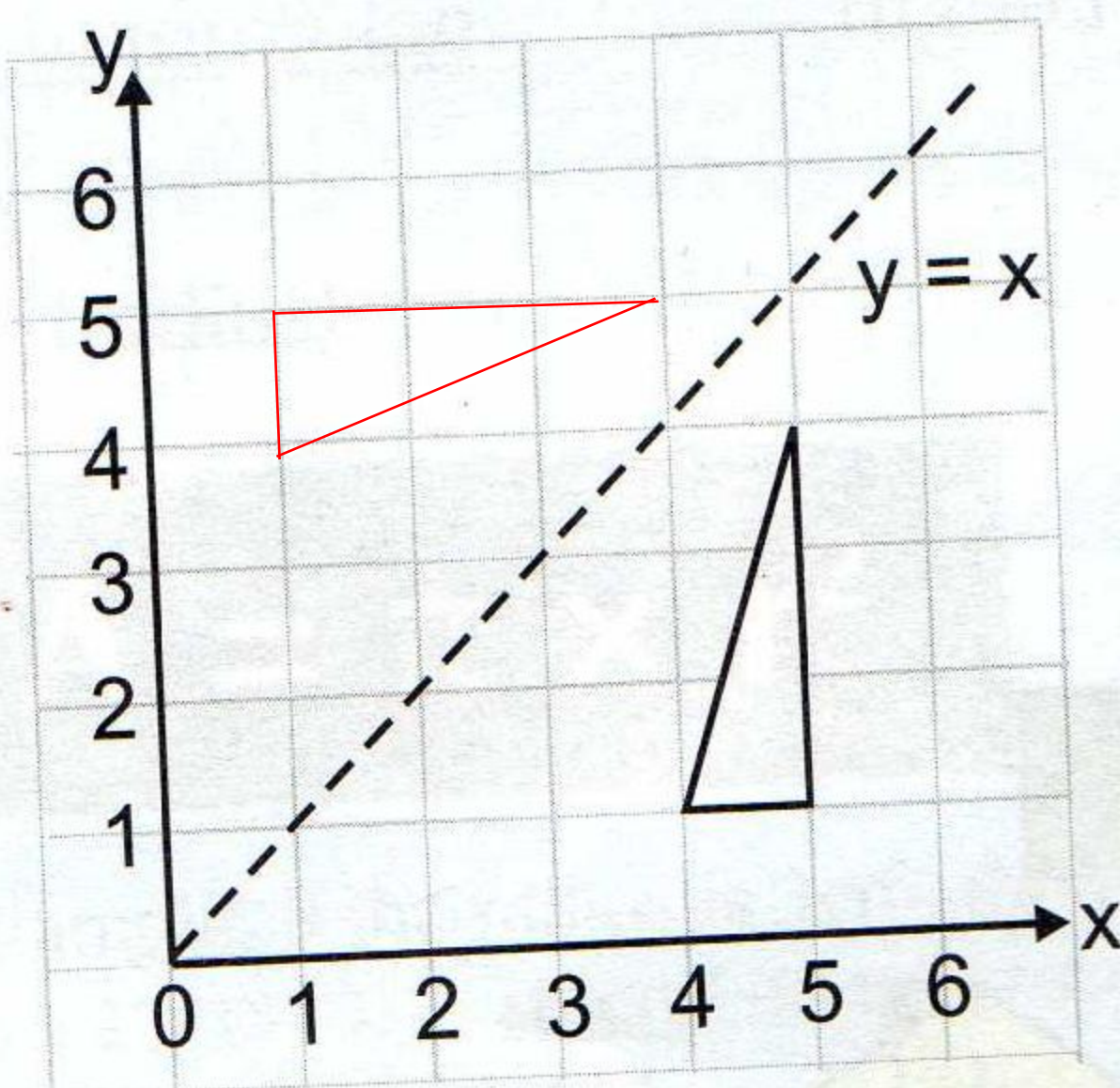
(2 marks)

- 4 (a) Reflect this shape in the mirror line.



(2 marks)

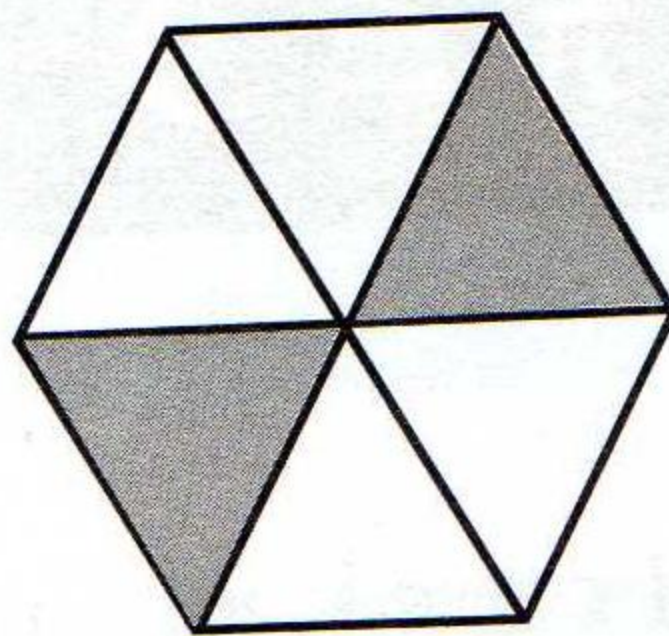
- (b) Reflect this triangle in the line $y = x$.



(2 marks)

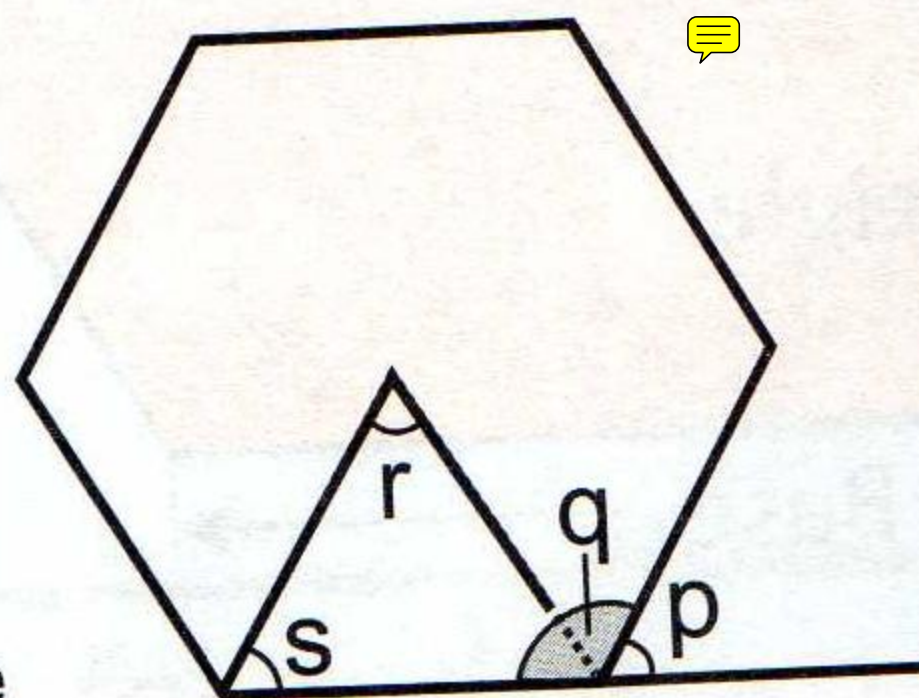
- 5 (a) What is the order of rotational symmetry of a regular hexagon? (1 mark)

- (b) What is the order of rotational symmetry of the shaded hexagon on the right? (1 mark)



- (c) In this regular hexagon, find the sizes of the lettered angles. Do **not** use a protractor. (You may use a calculator for this question.)

Diagram not drawn to scale



(4 marks)